

SPC400

Single Power Connector



特征

- 平面接触技术
强电流下接触电阻最小, 断开过程中产生的擦拭动作可清洁接触件表面
- 彩色防呆设计
根据颜色确定行业标准推荐的使用电压.
- 组合式模型
可单个连接, 也可组装多个连接, 防呆设计防止因误插
- 互换无公母设计
互换性设计, 无公母外壳, 利于减少库存

FEATURES

- Flat wiping contact system
Minimal contact resistance at high current, wiping action cleans contact surface during connection/disconnection
- Mechanical keyed housings
Color designates recommended application voltage per industry standards
- Molded-in dovetails
Secures individual connectors into "keyed" assemblies which prevents misconnection with similar configurations
- Interchangeable genderless design
Makes assembly easy and reduces stock

PRODUCT SPECIFICATIONS/产品规格

Current Rating (Amperes) 额定电流 (安培)	400A
Voltage Ratings (Volts) 额定电压 (伏特)	600
Contact Barrel Wire Size (AWG/ mm ²) 适用线径 (AWG/ mm ²)	AWG 1/0 to 300mcm (53.5mm ² to 152 mm ²)
Maximum Wire Insulation Diameter (mm/ inches) 最大绝缘导线直径 (毫米/英寸)	27.9 mm (1.1 inches)
AVG Contact Resistance(micro-ohms) 接触电阻 (微欧)	50
Insulation Withstanding Test Voltage (Volts AC/DC) 绝缘耐电压 (交流/直流)	2200
Contact Retention Force (lbf) 端子保持力 (磅)	500
Life/寿命	
a. No load (Contact/Disconnect Cycles) 无负载 (插拔次数)	To 10,000
b. Under Load (Hot Plug 250 cycles @ 120V) 负载状态 (120V 电压插拔 250 次)	100 A
Avg. Connection/Disconnect (lbf) 平均插拔力 (磅)	30
Operating Temperature Range °C 工作温度 °F	-20° to 105° / -4° to 221°
Flammability Rating of Housing Material 材料防火等级	
Plastic(塑胶壳) Polycarbonate	UL94 V-0
Contact(端子) Copper Alloy Silver plating	

Your Best High Power Connection



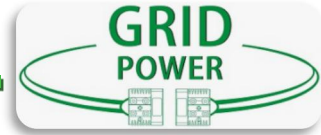
Shenzhen Grid Power Connectors Co., Ltd

Tel: +86 0755-23208099 23205933

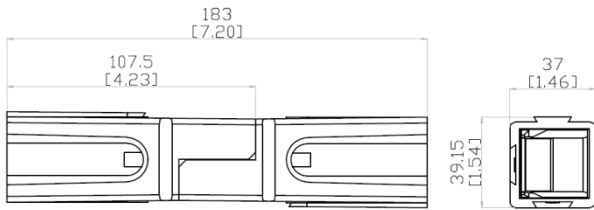
Address: The 2nd Floor, Building B&c, Plant 1, Senyang Technology Park, Guangming District, Shenzhen City, PRC
www.gridpower-conn.com www.grd-power.com

SPC400

Single Power Connector

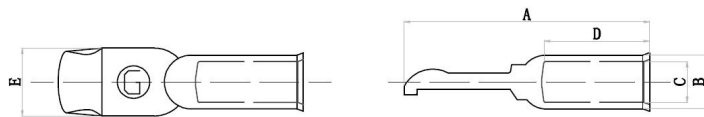


HOUSING/胶壳



Part Number 料号	Housing Color 胶壳颜色	
SPC400A1G1	Red 红色	
SPC400A1G2	Green 绿色	
SPC400A1G3	Black 黑色	
SPC400A1G4	White 白色	
SPC400A1G5	Blue 蓝色	
SPC400A1G6	Yellow 黄色	
SPC400A1G7	Orange 橙色	
SPC400A1G8	Gray 灰色	
SPC400A1G9	Brown 棕色	
SPC400A1G10	Pink 粉色	
SPC400A1G11	Purple 紫色	

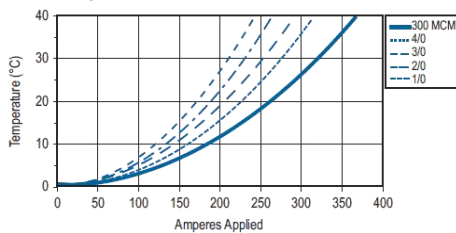
CONTACTS /接触件



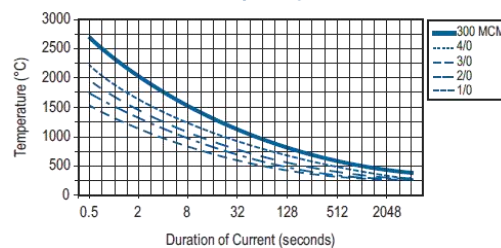
Part Number 料号	Description 描述	Wire Size/线径		-A-		-B-		-C-		-D-		-E-	
		AWG	sq. mm	mm	In.	mm	In.	mm	In.	mm	In.	mm	In.
A1	S907 Individual 单粒	2/0	67.4	75.2	2.96	16.3	0.64	12.45	0.49	31.7	1.25	20.6	0.81
A2	S908 Individual 单粒	4/0	107.2	79.2	3.12	19.1	0.75	15.8	0.62	32.8	1.29	20.0	0.79
A3	S910 Individual 单粒	300mcm	152	73.9	2.91	22.2	0.87	19.1	0.75	32.5	1.28	20.6	0.81
A4	S916 Individual 单粒	3/0	85	75.1	2.96	17.9	0.7	14.7	0.58	32.8	1.29	20.6	0.81
A5	S917 Individual 单粒	1/0	53.5	73.9	2.91	12.95	0.51	11.1	0.44	31.8	1.25	20.6	0.81

TEMPERATURE RISE CHARTS /温升测试

Temperature Rise at Constant Current/温升曲线



Pulse Current Capability/脉冲电流



Your Best High Power Connection



Shenzhen Grid Power Connectors Co., Ltd

Tel: +86 0755-23208099 23205933

Address: The 2nd Floor, Building B&c, Plant 1, Senyang
Technology Park, Guangming District, Shenzhen City, PRC
www.gridpower-conn.com www.grid-power.com

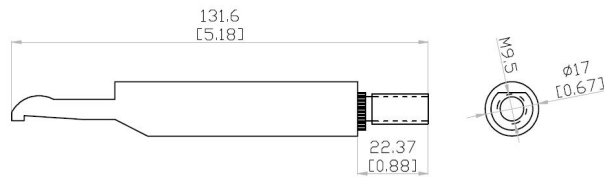
SPC400

Single Power Connector

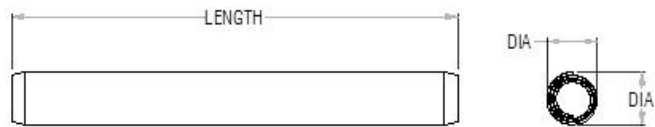
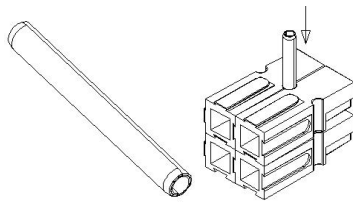


Busbar/接触件

Part Numb 料号	Description 描述
S350BBS	Silver Plated 镀银

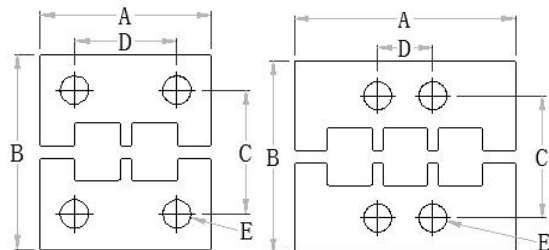
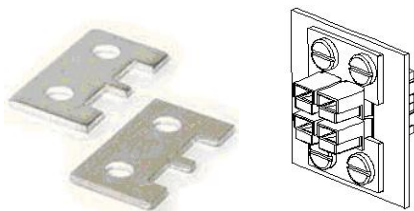


RETAINING PINS/定位销



Part Number 料号	Description 描述	-DIN-		-LENGTH-	
		mm	In.	mm	In.
G110G18	1-HIGH BLOCK	4.98/5.26	0.196/0.207	25.40	1.00
G110G20	2-HIGH BLOCK	4.98/5.26	0.196/0.207	38.10	1.50

MOUNTING CLAMPS/安装支架



Part Number 料号	Number of Poles 极数	-A-		-B-		-C-		-D-		-E-	
		mm	In.	mm	In.	mm	In.	mm	In.	mm	In.
G1464G1	2 Pole	71.4	2.81	55.7	2.19	43.0	1.69	28.6	1.13	4.8	0.19
	4 Pole	71.4	2.81	84.4	3.32	71.7	2.82	28.6	1.13	4.8	0.19
G1464G2	3 Pole	100.8	3.97	55.7	2.19	43.0	1.69	57.2	2.25	4.8	0.19
	6 Pole	100.8	3.97	84.4	3.32	71.7	2.82	57.2	2.25	4.8	0.19

Your Best High Power Connection



Shenzhen Grid Power Connectors Co., Ltd

Tel: +86 0755-23208099 23205933

Address: The 2nd Floor, Building B&c, Plant 1, Senyang Technology Park, Guangming District, Shenzhen City, PRC

www.gridpower-conn.com www.grid-power.com